



Poverty Point Mound

Temple Mound

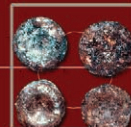
Burial Mound

# Where Do These Artifacts Belong

Try and find these artifacts in the three mound photos above. Lift the flip panels to see where they are found.



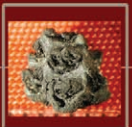
Baked Clay Objects



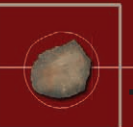
Ear Spools



Jasper Beads



Maize



Shell Tempered Pottery

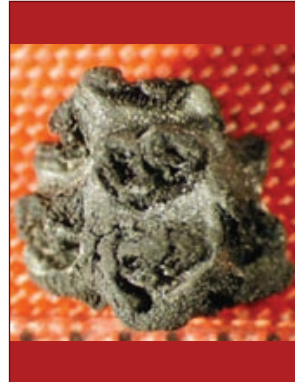


Raptor Motif Vessel

## Poverty Point Mound



## Temple Mound



## Burial Mound



### Flip Panels

Artifacts are not in order so as not to give away where they are hidden within panel.