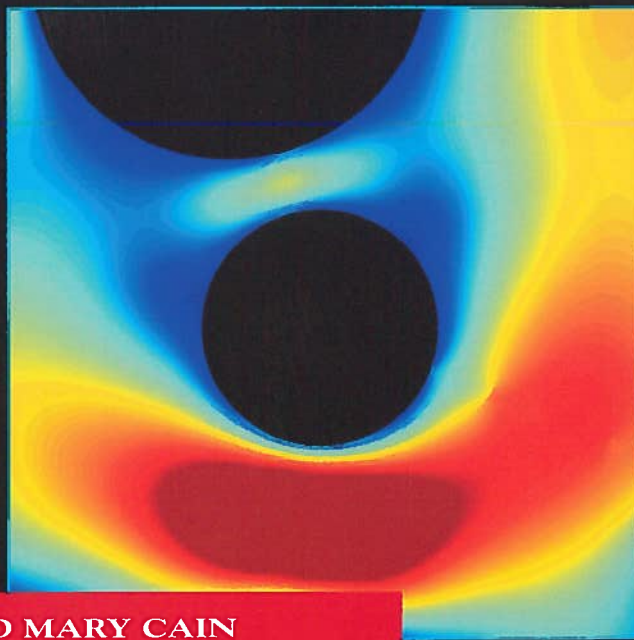
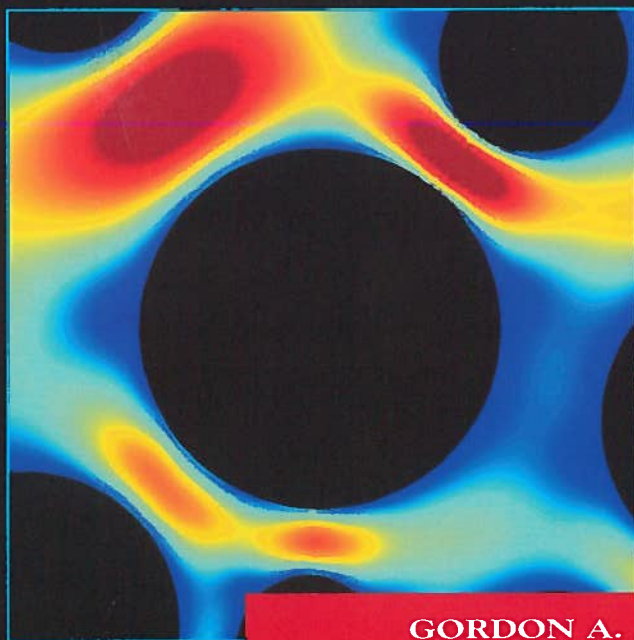
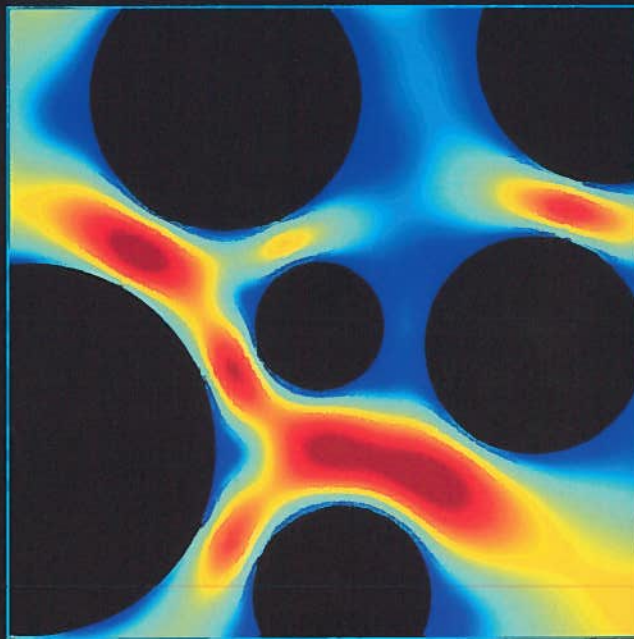
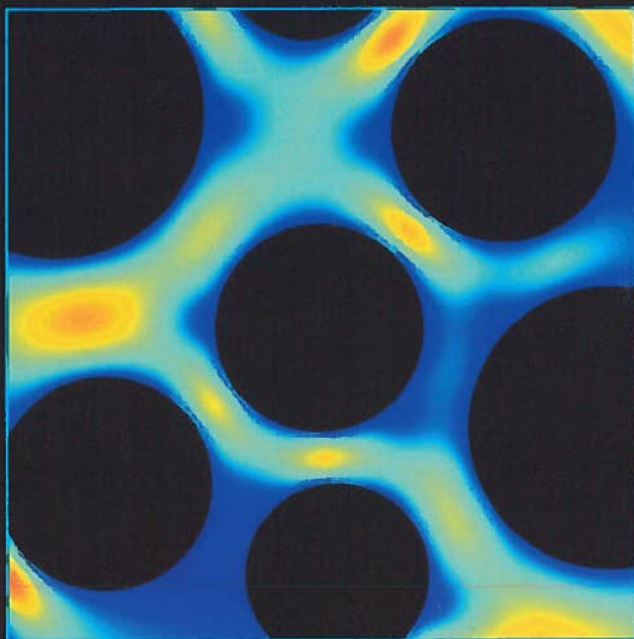


Chemical Engineering

Alumni Newsletter
Volume 16 • Fall 2001



GORDON A. AND MARY CAIN
DEPARTMENT OF CHEMICAL ENGINEERING
LOUISIANA STATE UNIVERSITY

Letter from the Chairman



Dear Alumni and Friends,

A new building still remains a high priority for the Gordon A. and Mary Cain Department of Chemical Engineering. Planning money from the state of Louisiana is already being put to use on the project, and the appointed architectural firm is drawing up the plans. The new facility will be 72,500 gross square feet and will cost \$16.5 million, \$7.2 million of which has been approved by the state. The remaining \$9.3 million will need to be self-generated.

Meanwhile, the department is continuing other modernization and improvement efforts. We are actively trying to recruit new faculty. In fact, we are in the final stages of negotiating offers to two prospective faculty members. One of these offers is to fill the first Gordon A. and Mary Cain Endowed Chair, and the other offer is for an associate professor position. We hope to report additional and successful details in our spring newsletter.

Progress continues in the undergraduate laboratory as well. In addition to other improvements, a new batch polymerization experiment has been added at the cost of \$1 million. Students began using this important tool for the first time during the fall semester.

The newly formed Alumni Advisory Committee held its first meeting in early August, to help the department define educational objectives and assessment tools to evaluate those objectives. The committee suggested that the department included more interaction with local industries for undergraduate students; placed greater emphasis on building teamwork and communication skills; and increased emphasis on environment, health, and safety issues within the curriculum.

We believe that all our efforts toward improvements and modernizations will ensure that our program, on both undergraduate and graduate levels, meets the needs of local industry and produces graduates of the highest caliber. Any efforts and support you or your company can provide toward the new chemical engineering building, in particular, would be greatly appreciated. While self-generating funds for the new building is a significant challenge, members of the Industrial Advisory Committee and University officials agree that a new building is necessary for recruiting faculty to fill the five Cain Endowed Chairs and for maintaining a competitive reputation among chemical engineering departments across the country.

As always, if you have any questions or comments regarding our program and the direction in which we are headed, please do not hesitate to stop by the department. The faculty and I would be most interested in speaking with you.

Sincerely,

A handwritten signature in black ink that reads "F. Carl Knopf". The signature is written in a cursive style with a large, stylized "K" at the end.

*F. Carl Knopf
Robert D. and Adele Anding Professor and
Gordon A. and Mary Cain Department of Chemical Engineering Chairman*

If you would like to know more about contributing to the department, please contact Carl Knopf at 225/578-1426 or send an e-mail to knopf@che.lsu.edu.

A WORD OF THANKS TO OUR 2001-2002 CONTRIBUTORS

Although financial support has been impressive, departmental expenses continue to rise, and further renovations are essential in remaining competitive with our counterparts at other universities. We would like to thank the following corporations and individuals for their roles in maintaining the outstanding reputation that LSU has achieved throughout the years.

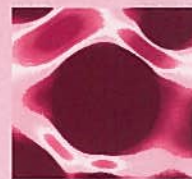
PRIVATE SUPPORTERS

HENRY AND MARY ABBOTT	MARY AND FRANK R. GROVES, JR.
EDWIN L. ANDERSON	LYNN F. GUIDRY
ROBERT AND ADELE ANDING	CLIFTON HILL
JAN BARLOW, JR.	JACK HOPPER
LAWRENCE F. BECNEL, JR.	ALVIN LANDRY
JOSEPH BUTTERWORTH, JR.	EUGENE LUC
GORDON A. AND MARY CAIN	SHIRLEY A. MAYHALL
JOHN AND NADINE CARTWRIGHT	STEPHEN AND PATRICIA MELSHEIMER
ARMANDO AND CONSUELO CORRIPIO	CHARLES RODDEY
CLARENCE M. EIDT	WALTER H. AND JANICE C. SILVER
ROY GERARD	R. WOODROW AND MARILYN WILSON

CORPORATE SPONSORS

AIR PRODUCTS	IMC GLOBAL
BP AMOCO	MARATHON ASHLAND PETROLEUM, LLC
CHEVRON USA	MCLAUGHLIN GORMLEY KING
CONOCO, INC.	PRAXAIR
THE DOW CHEMICAL COMPANY	PPG INDUSTRIES, INC.
EXXONMOBIL	SHELL OIL
FISCHER-ROSEMOUNT	TEXACO
HONEYWELL	UNION CARBIDE

On the Cover



The images on the cover illustrate velocity profiles from porous media research. Assistant Professor Karsten Thompson, who is conducting this research at LSU, graciously supplied these images.

CHEMICAL ENGINEERING is published for the benefit of its alumni and students. Special thanks to former editor Sharon Broussard for her contributions to this issue. Comments and suggestions should be directed to:

EDITORIAL STAFF

F. CARL KNOPF,
Chairman

LYNNA L. DUNN
Editor

K.T. VALSARAJ,
Faculty Adviser

Gordon A. and Mary Cain
Department of Chemical Engineering
110 Chemical Engineering Bldg./
Jesse Coates Hall
Baton Rouge, LA 70803
gradcoor@che.lsu.edu
225/578-3242



LSU IS AN EQUAL OPPORTUNITY/
ACCESS UNIVERSITY
CHEMICAL ENGINEERING
WAS PRODUCED BY THE LSU OFFICE
OF UNIVERSITY RELATIONS
TERESA DEVLIN, EDITOR
MARADEE CRYER, DESIGNER
PRINTED BY LSU GRAPHIC SERVICES
02009 • 3M • 4/02

Machine Shop Supports Upgrade of Undergraduate Lab

Ask Paul Rodriguez what he and his coworkers do in the Department of Chemical Engineering's machine shop, and he'll tell you, "we build cool things." As the machine shop manager, Rodriguez—along with undergraduate laboratory manager Bob Perkins, Fred McKenzie, Martin Van Gundy, and four student workers—keeps the shop running and in excellent shape.

Rodriguez and his team agree that the best part of the job is that "the work is challenging and always changing." The work includes everything from actually designing the working parts of experiments using AutoCAD and FeatureCAM to building the experiments themselves, putting them in functional order, and maintaining their performance. The polymerization unit is just one example. The machine shop team was given a picture of a similar unit and its description. Then the staff worked with Professor Kerry Dooley to reduce the scale and built a unit to suit the specific needs of the chemical engineering undergraduate laboratory.

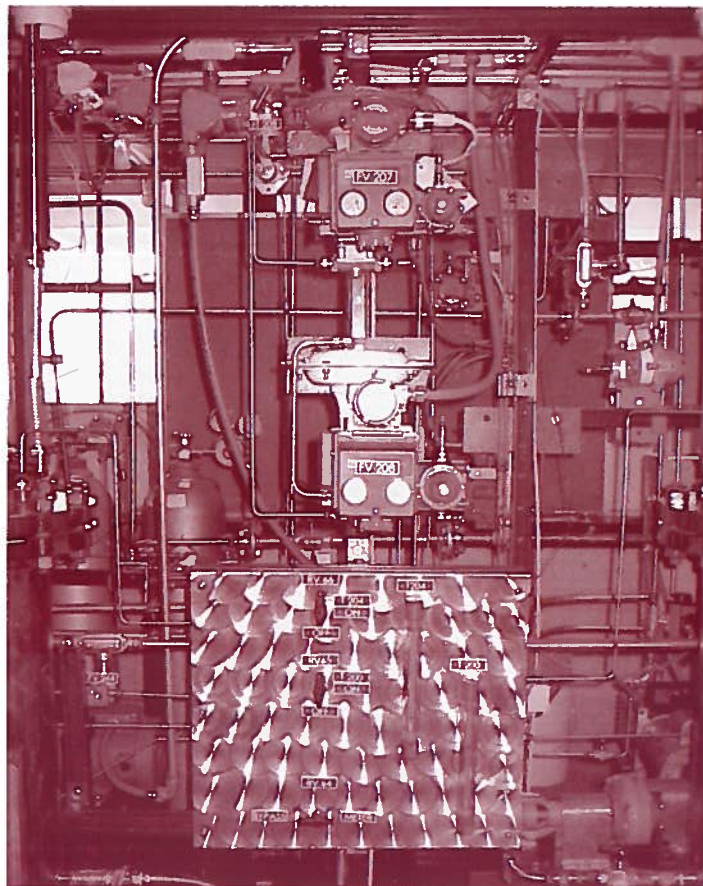
Perhaps the most important and challenging role that the machine shop has played in recent years has been in assisting the rest of the chemical engineering department in improving the undergraduate lab. In the last three years, more than \$3 million in funding has been used to make improvements to the undergraduate lab and, subsequently, to undergraduate education in general. Dooley and Professor Carl Knopf were extremely instrumental in acquiring this funding.

Rodriguez said the first steps the machine shop would take to help increase the quality of undergraduate education would involve overall shop improvements.

When he began his job 18 years ago, Rodriguez said the machine shop had one piece of heavy equipment—a manual milling machine. This machine is still going strong, but it now sits beside a new computerized milling machine. Soon, both will be joined by a computerized lathe.

Rodriguez said that computer-controlled machines aid in building better teaching tools, such as the polymerization unit. The shop has built four major experiments in the last three years, including the yeast experiment, which involves Professor Martin Hjortsø's new fermentor.

Lab computers have also been upgraded and made to interface with similar experiments within the last two years. Rodriguez credited Dooley and Jeremy Landry, the department's computer science intern, with assisting the machine shop in this effort. These improvements, as well as the installations of overhead projection systems in the classrooms, have made undergraduate students very happy.

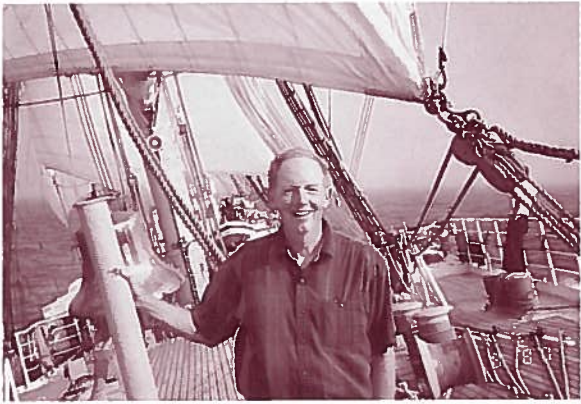


THE POLYMERIZATION UNIT IS AN IMPORTANT PART OF THE UNDERGRADUATE LAB.



PROFESSOR MARTIN HJORTSØ SHOWS OFF THE NEW YEAST FERMENTOR.

Catching up with Professor Emeritus Paul Murrill



PROFESSOR EMERITUS PAUL MURRILL ENJOYS THE SALTY SEA AIR.

Chatting with Professor Emeritus Paul Murrill—whom Professor Armando Corripio calls “a real Southern gentleman and a great person”—is a true pleasure, no matter the subject.

Past students from the Department of Chemical Engineering will remember Murrill as serving as part of the general faculty from 1963 to 1967 and as the department chair from 1967 to 1969. Corripio, who studied under Murrill during his own years as a student, said he remembers Murrill as “an excellent teacher.”

“His research was in automatic process control, and he taught me my first process control course in the Department of Mechanical Engineering, before the Department of Chemical Engineering had a course of its own. He could make difficult concepts easy to understand. He would teach only the basic concepts, leaving you with the conviction that they were all that mattered,” Corripio said.

In addition to his work in the lab and in the classroom, Murrill also wrote one of the first textbooks on automatic process control in 1967. Later, he co-wrote nine other books on a variety of subjects, including process mathematical modeling and computer programming.

Murrill left the department to serve as LSU’s provost from 1969 to 1974. He then went on to serve as chancellor of LSU until his retirement in 1980.

When asked what he missed most about LSU, particularly his years in the Department of Chemical Engineering, Murrill replied, “the people, but not the parking problems.” He also said that he had enjoyed his years in the Department of Chemical Engineering “very, very, very, much,” noting that he found it fulfilling to be around “such bright people,” students and faculty alike.

After his retirement from LSU, Murrill first went on to take charge of research and development for Ethyl Corporation. He then became chairman and chief-executive-officer of Gulf States Utilities (now Entergy). He said that he “stopped being an employee” in the late 1980s, and has since served on the corporate boards of six companies: Entergy, Tidewater Incorporated, Howell Incorporated, Baton Rouge Water Company, ChemFirst, and MicroProbe.

When he’s not doing “board work,” Murrill said he enjoys spending time with his family, particularly his four grandsons. Murrill and his wife had three sons themselves, and there has not been a girl born in his family line “since 1904.” (Murrill also enjoys genealogy.) Murrill’s other interest range from “modest” gardening to giving a series of lectures on the “Christian Church of the Middle Ages” at University Baptist Church.

Now... and Then



PROFESSOR LOUIS THIBODEAUX REVIVES HIS TRADITION OF CYCLING AROUND CAMPUS (LEFT), SOMETHING HE FIRST DID DURING HIS GRADUATE STUDIES IN THE LATE 1960s AT LSU (RIGHT).



Alumni Advisory Committee Meets to Help with ABET Accreditation

The newly formed Alumni Advisory Committee met for the first time in August to help the department define educational objectives and assessment tools to evaluate those objectives. Zaki Bassiouni, chair of the Department of Petroleum Engineering at LSU and member of the national Engineering Accreditation Committee, presented an overview of the Accreditation Board for Engineering and Technology's 2000 accreditation process. Professor Gregory Griffin, coordinator for the accreditation process for the Gordon A. and Mary Cain Department of Chemical Engineering, led the group through a list of current objectives and offered background information for new ideas.

The committee suggested faculty members and coursework in the chemical engineering curriculum should include more interaction with local industries for undergraduate students; place greater emphasis on building teamwork and developing communication skills; and increase the emphasis placed on environment, health, and safety issues within throughout the department's curriculum. Members of the committee also discussed emphasizing open-ended problem-solving into the courses, including into lecture courses that primarily focus on specific core subject areas.

Yvette Golda (B.S. 1996) agreed to serve as chair for the committee, and Todd Peltier (B.S. 1997) served as secretary. Alumni interested in attending next year's Alumni Advisory Committee meeting, or in participating in occasional surveys related to curriculum, should contact Griffin at griffin@che.lsu.edu for more information.



Continuing Improvements in the Undergraduate Laboratory

The Louisiana Board of Regents awarded Professors Martin Hjortsø, Kerry Dooley, and Michael Henson \$52,216 for the undergraduate lab experiment "Enhancement of Biochemical Engineering and Control Facilities." The funds enabled the department to acquire a state-of-the-art bioreactor and associated equipment as well as to train students in biochemical process engineering and to

develop a wide range of innovative experiments in biochemical kinetics, gas mass transfer, continuous culture dynamics, and bioreactor modeling and control. The principles taught through these experiments possess a wide range of applications, including possibilities in the medical and food industries as well as in the growing biomedical field.

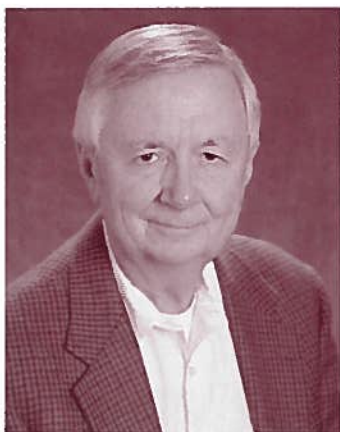
STF Funds Network Upgrade of Department of Chemical Engineering

The Student Technology Fee (STF) Oversight Committee awarded \$24,500 to Professors Kerry Dooley and Carl Knopf and Department Network Administrator Jeremy Landry to upgrade the department's networking equipment.

"This will enhance our student labs in several ways: improving speeds on computer-control experiments; providing students with

faster, more reliable access to remote data storage; and allowing for full integration of laboratory experiments into our classrooms," Landry said. "We will also be better able to integrate new technologies like video conferencing and remote course broadcasting into our classroom environment with greater speed and ease."

Douglas Harrison: Hard Work and Gentle Firmness



In January, Professor Douglas Harrison celebrated 33 years as part of LSU's Gordon A. and Mary Cain Department of Chemical Engineering. Harrison completed his doctorate at the University of Texas in 1966. He then went to work for Monsanto conducting new product research for three years. After that, he joined LSU's chemical engineering faculty as an assistant professor in 1969.

Harrison said he "always expected to enter academia after a stint in industry," and that's just what he did. He went on to serve as the department chair from 1976–1979 and is currently the Alexis and Marguerite Voorhies Professor.

During his time at LSU, Harrison has taught most of the undergraduate core courses plus the graduate-level course on reactor design. He has received several LSU teaching awards through the years, including the Dow Award in 1988, 1995, and 2000, a three-time feat that no one else has accomplished. Harrison has also remained active in regard to graduate mentoring. He has served as major professor for 10 students pursuing their doctorates, 28 students working toward a master's degree, and he is currently advising three doctoral candidates. One graduate student characterized Harrison as "a kind, considerate, and patient person" who is also "diligent and strict in academics."

Former students also continue to think of Harrison with respect and fondness. Phillip Westmoreland (M.S. 1974) noted Harrison's positive impact on his own career. "All of my work in the chemistry of chemical engineering follows plausibly from the master's that he and I worked on. He has remained my friend and respected colleague," Westmoreland said.

David Cailler (B.S. 1974, M.S. 1976, Ph.D. 1980) remarked, "Dr. Harrison is a great teacher and a great researcher, a combination that is, in my opinion, becoming increasingly rarer at most universities where research is the main emphasis. I have nothing but praise for Dr. Harrison as both a teacher and a researcher, as I have experience with him in both of these areas," Cailler said. "The major professor/graduate student relationship is in many ways similar to the boss/worker relationship in the industrial world. Having been in the industrial world for over 20 years and with this similarity in mind, I consider Dr. Harrison to be the best 'boss' I've had. His 'gentle firmness' led me to success in both my undergraduate and graduate work at LSU."

Gary Focht (B.S. 1983, M.S. 1986, Ph.D. 1988) echoed Westmoreland and Cailler. "I have heard of others having nightmarish experiences in graduate school. Mine, under the guidance of Dr. Harrison, was quite the opposite," Focht said.

Most of Harrison's research during his years at LSU has been in the area of noncatalytic gas-solid reactions applied to gas separations. Currently, he has three active research projects:

- "High Efficiency Desulfurization of Synthesis Gas" (with Assistant Professor Elizabeth Podlaha; sponsored by the Department of Energy [DOE]). Harrison has been working on various aspects of this problem for about 25 years. He was a member of the organizing committee, lecturer, and co-editor of the proceedings of a 1996 NATO Advanced Studies Institute on this topic held in Kusadasi, Turkey. Currently, he is studying the use of $\text{CeO}_2\text{-ZrO}_2$ sorbents with the objective of reducing H_2S concentrations in coal-derived gas to the sub-ppm levels required by the DOE Vision 21 concept.
- "Hydrogen Production Using Sorption Enhanced Reaction" (with Professor Armando Corripio; current support from NASA on a sub-contract from TDA Research, Inc., a Colorado firm). The basic idea is to produce 95+ percent hydrogen in a single reactor containing a mixture of Nitrogen-based reforming catalyst and Carbon-based CO_2 acceptor. Harrison has been working on various aspects of this problem for about 10 years. His current concept is now receiving worldwide attention. In addition to the interest from NASA and TDA, other groups in the U.S. and from Japan and Norway are incorporating the idea into their research. He was invited in early 2001 to discuss this work at the fourth Advanced Clean Coal International Symposium in Tokyo. Harrison has been recognized along with colleagues from Los Alamos National Laboratory by the Federal Laboratory Consortium with one of 30 awards in 2001 for advancing "Technology in Service to Society."
- " CO_2 Capture from Flue Gas Using Dry Regenerable Sorbents" (supported by DOE under subcontract from the Research Triangle Institute in North Carolina). The objective is to develop a simple and economical process for retrofit on existing electric power plants to reduce atmospheric emissions of CO_2 . The research addresses the growing concern over global warming associated with the emission of greenhouse gases.

When he's not working, Harrison said he enjoys "traveling, woodworking, and loafing."

Faculty News

While visiting his son, Michael (B.S. 1997), in St. Croix, Professor **Armando Corripio** toured the Hovensa Refinery and visited with the plant manager, Rene Sagebien (B.S. 1963). Corripio also continued to teach his “Ethics for Scientists and Engineers” lecture, as part of the Integrative Graduate Research Training (IGERT) program. In addition, Corripio has developed a new hobby. “I started to play bridge at the Baton Rouge Bridge Club (BRBC) about a year and a half ago with Dr. [Danny] Reible, but did not take it up seriously until last November, when I became a regular,” he said. “Since Dr. Reible is seldom in town, I got myself several other partners.” Last summer, Corripio began to play bridge competitively. He attended the Lake Charles and New Orleans Regionals in May, the Baton Rouge Regional in June, and three other sectionals in late summer and early fall. As a result, he earned more than 20 master points and the distinction of becoming a “sectional master.” Corripio was even declared the Rookie of the Year at the BRBC.

Professor **Douglas Harrison** and Alejandro Lopez-Ortiz co-authored the paper “Hydrogen Production Using Sorption Enhanced Reaction.” Harrison presented the paper at the United Engineering Foundation Conference on Chemical

Reaction Engineering: “Novel Reaction Engineering for the New Millennium.” More than 120 people from 20 different countries attended the conference, which was held in Barga, Italy. Harrison also co-authored two papers with Assistant Professor **Elizabeth Podlaha** and two of their graduate students, Anirban Mukherjee and Arvind Bhat. The papers, “Electrochemical Synthesis and Characterization of $Ce(1-x)Zr(x)O_2$ Nanocrystalline Powders” and “Ceria-Zirconia High Temperature Desulfurization Sorbents,” were presented at the American Institute of Chemical Engineers (AIChE) meeting in Reno, Nevada.

Before heading to Germany to conduct sabbatical research at the University of Stuttgart, Associate Professor **Michael Henson** co-authored “Dynamic Modeling and Linear Model Predictive Control of Gas Pipeline Networks,” in the *Journal of Process Control*. He also co-authored an article, titled “Bifurcation Analysis of Continuous Biochemical Reactor Models,” for the journal *Biotechnology Progress*. Henson co-presented the paper “Bifurcation Analysis for Discrimination of Budding Yeast Models” at the International Conference on Computer Applications in Biotechnology in Quebec City, Canada. In addition, he presented “Dynamic Modeling and Control of

Yeast Cell Populations in Continuous Biochemical Reactors” at the second Pan-American Workshop on Process Systems Engineering in Guarujá, Brazil. Henson also served on a review panel, “Quantitative Systems Biotechnology,” for the National Science Foundation (NSF). He continues to serve as the associate editor for the *Journal of Process Control* and as director of the Computing and Systems Technology Division of AIChE.

Assistant Professor **Elizabeth Podlaha** co-presented three papers at the joint meeting between the Electrochemical Society and the International Society of Electrochemistry in San Francisco, California. The papers were titled “Electrodeposition of Ni-W Alloys into Deep Recesses,” “Kinetic Study of FeCoNi Ternary Alloy Deposition,” and “Electrodeposition of FeCoNi Quaternary Alloys.” She also published “Selective Electrodeposition of Nanoparticulates into Metal Matrices” in the journal *Nano Letters*.

Professor **Danny Reible** chaired the NATO Advanced Study Institute on In-Situ Assessment and Remediation of Contaminated Sites—which included more than 100 participants from the U.S. and Europe—in Prague, Czech Republic. Based upon its success, he secured funding from the NSF in the

amount of \$90,000 for a similar Pan-American Advanced Study Institute held July 22–August 3, 2001, in Rio de Janeiro, Brazil. Reible also gave testimony on strategies to manage contaminated sediments before the U.S. House Committee on Water Resources and the Environment. In spite of these accomplishments, Reible said he’s beginning to feel his age in some ways, especially when he sent his oldest daughter, who used to “visit the back of his class,” to college this past fall.

Professor **K.T. Valsaraj** presented an invited paper on “Mineral Oxides For Wastewater Treatment” at the International Conference on Materials for Advanced Technologies in Singapore. The conference featured lectures by Nobel laureates and showcased materials-related technology research in the interest of advancing this kind of research in developing countries. Valsaraj also participated in a “Technology Forum on Advanced Catalysis” at Lamar University. The event was hosted by the Hazardous Substance Research Center. **Raghunathan Ravikrishna**, a post-doctoral researcher with Valsaraj, presented a paper on “Reusable Adsorbents for Dilute Solutions Treatment” at the Air and Waste Management Association’s annual meeting in Nashville, Tennessee.

Faculty Awards

► **F. Carl Knopf and Kerry Dooley** were the inventors behind the patent titled "Pressure-Assisted Molding and Carbonation of Cementitious Materials." The patent was issued to LSU in 2001.

► TDA Research, Inc. awarded \$151,043 to **Douglas Harrison and Armando Corripio** for their work on "A Novel Hydrogen-Oxygen Generation System."

► The U.S. Department of Energy awarded \$268,196 to **Michael Henson** for his work on "Dynamic Modeling and Automatic Control of Natural Gas Pipeline Networks."



► The National Science Foundation awarded **Elizabeth Podlaha** a \$4,250 supplement to support undergraduate research in nanocomposite electrodeposition.

► **Danny Reible** received confirmation of an award from the Environmental Protection Agency to fund the Hazardous Substance Research Center/South and Southwest in the amount of \$900,000

this year and a total of \$4.5 million for the next five years. He has also received funds in the amount of \$150,000 for a technical assistant for the Brownfields program.

► **Karsten Thompson** received \$36,456 from the Schlumberger Corporation for his research on "Pore Level Modeling of Polymer Transport and Clean-Up in Propant Packs."

PROFESSOR DANNY REIBLE ACCEPTS AN AWARD CHECK FROM THE EPA'S CHRISTIE WHITMAN.

Wedding Bells Ring for Professor Emeritus Frank R. Groves, Jr.



Mary R. Focht of Akron, Ohio, and Professor Emeritus Frank R. Groves, Jr., were married on June 10, 2001. Mary and Frank were both widowed in the fall of 1999. Mary's deceased husband, Lawrence G. Focht, was a 1969 Ph.D. graduate of the

Department of Chemical Engineering, and Groves served as his major professor. After graduation, Lawrence Focht joined the chemical engineering department at the University of Akron, where he taught for 29 years and served as department chairman.

The Fochts and the Groves kept in touch throughout the years with Christmas letters and occasional contacts. The Fochts' son, Gary, also earned his doctorate in chemical engineering at LSU, and Groves served as a member of his research committee. Gary married Lisa Knotts, a former student worker in the department,

and he now works for Albemarle Corporation in Baton Rouge.

During the illness of their spouses, Mary and Frank began to correspond and became better acquainted during her visits with her son and his family. Eventually, it all led to their recent marriage. Mary is adjusting well to the new climate of Baton Rouge and enjoys being close to her son, Gary, and his family as well as to her daughter, Kathleen, a chemical engineer with International Paper Company in Natchez, Mississippi.

Mary's third child, Jim, lives in Charlotte, North Carolina, and teaches severely developmentally handicapped children. Professor Groves' son, Frank D., is an assistant professor of epidemiology at the Medical University of South Carolina in Charleston. Groves continues to teach part-time at LSU and also enjoys activities with his new wife, their children, and her six grandchildren.

Fall 2001 Departmental Distinguished Seminar Series

MADHAV DATTA

Electrochemical Processing Technology in Microelectronics
September 10, 2001

According to Madhav Datta, electrochemical processing has emerged as a “technology of choice for the manufacturing of a variety of electronic components.” Datta’s work at the Intel Corporation focuses on the application of electrochemical deposition and dissolution processes in microelectronics. Datta described one example of his work—fabrication of flip-chip interconnect technology—to underline the importance of continuing research in the electrochemical material field, especially in the areas of nanostructures and nanotechnology. Datta’s visit was hosted by Assistant Professor Elizabeth Podlaha.

RUSSELL DUNN

Industrial Examples of Process and Product Design
October 5, 2001

The focus of Russell Dunn’s presentation was the past two decades’ development of process integration design tools that target reductions in the operating and capital costs of chemical processes. A consultant with McSwain Engineering, Inc., Dunn’s examples included an overview of wastewater process designs identified and implemented within Solutia, Inc., in 1999–2001. The presentation illustrated the effectiveness of these design tools for identifying economically attractive solutions. Dunn’s visit was hosted by Professor Ralph Pike.

PRASHANT KAMAT

Hydroxyl Radical Mediated Oxidation in Environmental Remediation
October 26, 2001

Prashant Kamat’s discussion involved advanced oxidation processes—such as photocatalysis, sonolysis, radiolysis, and UV/H₂O₂—and their roles in the degradation of environmentally hazardous chemicals. Kamat’s work at the University of Notre Dame involves employing transient absorption spectroscopy and

product analysis to elucidate the mechanistic and kinetic details of radical reactions that occur during the mineralization of model organic pollutants. Kamat’s visit was hosted by Professor K.T. Valsaraj.

JOHN SIDDALL

Industrial Polymer Process Development
November 16, 2001

In his presentation, John Siddall (B.S. 1977) of the Dow Chemical Company noted that chemical engineers are ideally suited to the development of commercial processes for polymer manufacture. The physical properties of materials change tremendously during polymerization, and reliable management of these changes is a mechanical challenge. Siddall’s presentation offered insight on some of the problems in real industrial polymer processes and how they can be solved. Siddall’s visit was hosted by Professor Kerry Dooley.

VIJAY JOHN

Lipid Self-Assembly and the Templated Synthesis of Nanostructured Materials
December 7, 2001

Vijay John’s discussion pointed out the ability of lipids to self-assemble in a remarkable variety of microstructures that serve as scaffolds and templates for the synthesis of nanostructured materials. Such knowledge proves important in the synthesis of ceramics, polymers, and polymer-ceramic and polymer-polymer nanocomposites and the shape control of semiconductor and magnetic nanoparticles. John is a member of the faculty at Tulane University.

Student News



PROFESSOR MARTIN HJORTSØ HELPS INCOMING GRADUATE STUDENT RAVIKANTH IYER CHOOSE CLASSES FOR THE FALL SEMESTER.

News from the LSU Student Chapter of AIChE

2001–2002 OFFICERS:

President: Patrick Veillon
Vice President: Jay Stephenson
Secretary: Marilyn Caldero
Treasurer: Jesse Bond

The LSU student chapter of the American Institute of Chemical Engineers (AIChE) held its annual "BASF BBQ" on October 27, 2001. Students, faculty, and employees from BASF Corporation gathered in the courtyard near the Chemical Engineering Building on a beautiful Saturday. Everyone enjoyed Podnuh's Bar-B-Q and received special "AIChE BASF BBQ" T-shirts. LSU AIChE would like to thank BASF for sponsoring the event.

AIChE students are now preparing to attend the Spring Regional Student Conference in San Juan, Puerto Rico. The conference will be held on April 4–6, 2002. The students plan on presenting two research papers at the convention. They are also building a car fueled by a chemical reaction to compete in the conference's "ChE Car Competition." The LSU AIChE student chapter is funded by fundraising and donations.

2001–2002 Student Awards

One of Assistant Professor Elizabeth Podlaha's graduate students, **Qiang Huang**, was awarded a grant from the Electrochemical Society to present his experimental findings on nanostructured alloy multilayers at the joint meeting between the Electrochemical Society and the International Society of Electrochemistry in San Francisco, California.

2001–2002 Scholarship Recipients

Chemical Engineering Scholarship

Gaetano A. Aloiso

Jay W. Stephenson

O. Dewitt Duncan Scholarship

Dwight P. Bordelon

Gerard Family Scholarship

Marilyn Caldero

Jeremy M. Cash

Elaine V. Lim

Andre C. Marquette

Bradley K. Pinkstaff

Frank & Clara Groves Scholarship

Jennifer L. Bailey

R.L. Hartman Scholarship

William Lipham

Patrick Veillon

Paul M. Horton Memorial Scholarship

Scott M. Harang

Ryan E. Varnado

Marathon Ashland Scholarship

Gaetano A. Aloiso

Matthew K. Lemann

Barry M. Rogge

William McFadder Scholarship

Kim C. Trinh

Southwest Chemical Association Scholarship

Christopher Fogerty

Texaco Scholarship

Paul W. Martin

Jessica M. Reilly



CARL KNOPF, PROFESSOR AND DEPARTMENT CHAIR, PRESENTS SENIOR CHRISTOPHER FOGERTY WITH A \$5,000 SCHOLARSHIP CHECK FROM EQUSTAR.

Summer / Fall 2001 Commencement

SUMMER 2001 COMMENCEMENT

BACHELOR OF SCIENCE IN CHEMICAL ENGINEERING

Luis Felipe Aguilar

MASTER OF SCIENCE IN CHEMICAL ENGINEERING

Frederick Peter Harry, Jr.

FALL 2001 COMMENCEMENT

BACHELOR OF SCIENCE IN CHEMICAL ENGINEERING

Melati Samad Abdul

Timothy Bunda

Scott Folse

Adolph X. Menuet, Jr.

MASTER OF SCIENCE IN CHEMICAL ENGINEERING

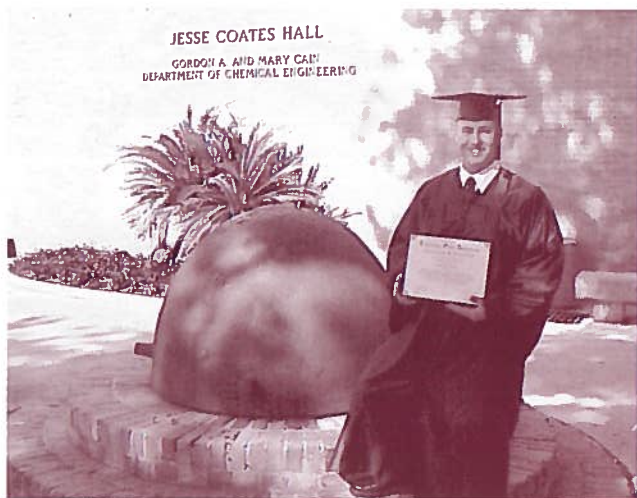
Travis S. Hendren

Prashant Mhaskar

Anirban Mukherjee

Lakshmikanth Namburi

Fabian F. Sanchez



**PROUD GRADUATE SCOTT FOLSE
SHOWS OFF HIS DIPLOMA.**



**PROFESSOR KERRY DOOLEY
CONGRATULATES GRADUATE
MELATI SAMAD ABDUL.**

Alumni News

Alumni Updates

If you would like for us to print news of your latest achievements, complete the enclosed card and return it to us, or e-mail us at gradcoor@che.lsu.edu.

1920s

Roy Paul Daniels (B.S. 1926, M.S. 1927) passed away on August 27, 2001. Prior to his death, Daniels established ten \$100,000 charitable remainder trusts for professorships at LSU, four of which were designated for the College of Engineering. Of these four, one has been designated for the Gordon A. and Mary Cain Department of Chemical Engineering and named for Paul M. Horton, a former professor in the department. Daniels was a retired Gulf Oil Corporation employee and a resident of Port Arthur, Texas. We extend our belated condolences to his family and friends.

1930s

An alumni friend of **Otis B. Rowland** (B.S. 1938) recently informed us that Otis passed away several years ago. We extend our belated condolences to his family and friends.

1940s

An alumni friend of **T. Ben Arnold** (B.S. 1940, M.S. 1942) recently informed us that Ben passed away. We extend our belated condolences to his family and friends.

Phillip R. Dykstra (B.S. 1949, M.S. 1950) retired in 1993 after 43 years in the rocket business. He lives in Salt Lake City, Utah.

An alumni friend of **Thomas Harper Goodgame** (B.S. 1947) recently informed us that Thomas died several years ago in Albuquerque, New Mexico, after retiring from Whirlpool Corporation. We extend our belated condolences to his family and friends.

Robert L. Jeansonne (B.S. 1948) is retired and enjoys boating, traveling, and reading.

Samuel C. Kahn (B.S. 1943) is retired and is a long-time volunteer with Habitat for Humanity, building homes and developing land for new houses.

An alumni friend of **Harold L. Keaton** (B.S. 1948) recently informed us that Harold passed away some 10–12 years ago, shortly after he retired from Crown Zellerbach in Bogalusa, Louisiana. We extend our belated condolences to his family and friends.

An alumni friend of **Robert Emmett O'Connor** (B.S. 1943) recently informed us that Robert passed away. We extend our belated condolences to his family and friends.

1950s

Jan Paul Bergeron (B.S. 1959) works as a general manager for Glenwood Cooperative, Inc. Besides his job, his activities include religion, his grandchildren, golf, and travel.

An alumni friend of **Whitney P. Breaux** (B.S. 1956) recently informed us that Whitney passed away in 1984 while employed by Olin in Charleston, Tennessee. We extend our belated condolences to his family and friends.

Family members of **Freddy Wallis Landaez** (B.S. 1959) and his brother, **Luis Alberto Wallis Landaez** (B.S. 1957) informed us that they passed away in 1995 and 1978, respectively. Freddy's son said the two men were very proud alumni of LSU, and we extend our belated condolences to their families and friends.

Ben D. Park (B.S. 1950) retired from Sun Oil Company in 1986. He now works as a volunteer for Crown Ministries.

Paul Kenneth Raiford (B.S. 1950) passed away on April 14, 1997. We extend our belated condolences to his family and friends.

Donald A. Winkler (B.S. 1957, M.S. 1958, Ph.D. 1961) works as an ophthalmologist. He is planning to retire next year.

1960s

John D. Donahue (B.S. 1960) retired this past summer after 25 years with BASF Corporation in New Jersey.

An alumni friend recently informed us that **Sebert A. Haynes** (B.S. 1960) passed away several years ago. We extend our belated condolences to his family and friends.

Joseph A. Kleinpeter (B.S. 1965) is the director of telecommunications for Dupont, in Wilmington, Delaware. After leaving LSU, he earned his doctorate from Tulane University and joined Conoco in 1968. He transferred to Dupont in 1982 and moved from research and development to information technology in 1985.

Carroll J. Macalusa (B.S. 1960) is retired. He enjoys traveling, gardening, walking, and doing charity work.

Pietro K. Piralla (B.S. 1964) is head of CPA Ingenieros Consultores C.A., a geotechnical and environmental consulting firm in Venezuela. Before joining CPA in 1978, he worked for Spencer Chemical Company, Procter & Gamble, and Shell Oil.

Emilio Rivera (B.S. 1961) signed our Web site's alumni guest book, but if anyone knows how to reach him, we would like some contact information.

Nolan M. Rome (B.S. 1962) retired after 38 years in the oil and gas industry (18 years with Chevron and 20 years with Mobil). At the time of his retirement, he was director of natural gas processing business development. He will now be working as a private consultant specializing in natural gas processing business development. He and his wife live in Kingwood, Texas, and like to travel both in the U.S. and overseas.

1970s

Michael L. Brown (B.S. 1973) is retired and enjoys tennis, golf, travel, and volunteer work.

Frank T. Davis (Ph.D. 1972) recently retired from his job at ExxonMobil Chemical. He now spends a lot of free time at his Toledo Bend vacation home.

Wilson Thomas Gautreaux (B.S. 1973, M.S. 1977, Ph.D. 1981) recently enjoyed a visit to the LSU campus and to the Gordon A. and Mary Cain Department of Chemical Engineering.

Samuel R. Goodson (B.S. 1970) was recently promoted to vice president and general manager of Rhodia Phosphorus and Performance Derivatives Asia Pacific. He and his family now live in Singapore, and he recently completed the formation of two joint ventures in China.

The chemical engineering department was also notified that **Kerry R. Kelly** (B.S. 1975) passed away this past summer. We extend our belated condolences to his family and friends.

Thomas C. Kelly (B.S. 1975) is part of the active staff at St. Edward Mercy Medical Center in Fort Smith, Arkansas. His practice as a vascular surgeon is located at the Cooper Clinic in Fort Smith.

George M. Lane (B.S. 1970) recently received a NASA Research Fellowship from the NASA Stennis Space Center to fund his doctoral program research in environmental toxicology. His research involves the development of a portable remote sensing system for the Federal Emergency Management Agency (FEMA) and other first responders.

Kelvin E. Langlois (B.S. 1977) works as a process safety engineer at Cytec Industries in Ama, Louisiana.

James R. Madden (M.S. 1974) is a senior SAP consultant with Origin Technology in Business, Inc. He specializes in plant maintenance, warehouse management, project systems, and materials management modules.

1980s

Dwayne P. Cormier (B.S. 1983) works on the staff of the U.S. Department of the Navy's Office of the Naval Inspector General as an environmental engineer. Cormier's position requires him to travel to Naval installations worldwide to assess environmental performance.

Marjorie F. Ferguson (B.S. 1984) was recently promoted to principal process engineer within the Oil, Gas, and Pipeline Division of Fluor Daniel in Sugar Land, Texas.

1990s

Femi Adebisi (Ph.D. 1999) works for Andersen Consulting in Houston. He is currently working on a business process reengineering for a crude pipeline company and is also involved in the e-commerce activities on the project.

Christopher M. Agostinelli (B.S. 1997) works for Nalco Chemical Company in ensuring optimum and trouble-free operations in chemical industries within the Houston area through the prevention of water and process-related problems.

Stephen C. Barrow (B.S. 1998) is a technical sales engineer with Witco Corporation in Greenwich, Connecticut.

Johnny Boey (M.S. 1998) works for General Electric Power Systems making large-scale gas turbines for Integrated Gasification Combined Cycle (IGCC) and gas-to-liquids applications.

Amy E. Breaux (M.S. 1999) is a member of the Intercontinental Ballistic Missile Team (Guidance Integrated Process Team) at Hill Air Force Base in Ogden, Utah. She provides battery support for the Minuteman III and Peacekeeper missiles.

Sonny Bringol (B.S. 1991) is a graduate student pursuing his M.B.A. at Carnegie Mellon's Graduate School of Industrial Administration.

Molly Soulier Browning (B.S. 1998) works as a process engineer for Shell Chemicals' technical support department.

Alicia C. Butler (B.S. 1999) is a process/project engineer in the Conventional Tech I Unit of Monsanto Chemical in Luling, Louisiana. She wrote that "in this unit, we produce glyphosate tech which, when added to water and surfactants, becomes the infamous weed killer—Roundup!"

Alan Chan (B.S. 1995, Ph.D. 1999) is a senior research and development engineer at Dow Chemical Company. He specializes in process and product development for specialty chemicals.

Frank C. Eymard (B.S. 1991, M.S. 1994) is working as an attorney for Adams & Reese, LLP, in New Orleans. His work concerns intellectual property, energy law, and defense litigation for the petroleum and petrochemical industry.

Jason D. Gardner (B.S. 1991) reports that baby Davin, who was born December 13, 2000, is doing "just fine!" Gardner is an assistant professor at Auburn University in the Department of Anatomy, Physiology, and Pharmacology. His current research focus is gender specific differences in the development of heart failure.

Steven M. Gardner (B.S. 1997) works as a process engineer for Albemarle's Process Development Center in Baton Rouge.

Yvette Morgan Golda (B.S. 1996) works as a process technology engineer at Albemarle's Process Development Center in Baton Rouge. Her focus is brominated flame-retardants and pharmaceutical intermediates, and she has received two international assignments in Thann, France. She is married to **John Golda** (B.S. 1996).

Cindy Feucht Grosse (B.S. 1995) works as a caustic evaporation process engineer with Occidental Chemical Corporation in Convent, Louisiana.

Susan D. Jackson (B.S. 1994) has worked for BASF Corporation for the past six years. She lives in Geismar, Louisiana, and works as environmental/health/process safety coordinator for the ethylene oxide/ethylene glycol unit.

Ann Williams Jordan (B.S. 1994) works as a process engineer for Kellogg, Brown, and Root in Mobile, Alabama. She is currently on extended leave so that she can be a full-time mom to her son, Ross, who was born May 1999.

Hooi Pearl Kuan (B.S. 1998) is pursuing graduate studies at the University of Texas at Arlington. She has spent the last few years working as an application engineer for Perry Equipment Corporation in Houston.

Ohseong T. Kwon (M.S. 1998) works for LG Chemical as a part research engineer in Daejeon, South Korea.

Thomas T. Luong (M.S. 1996) works as a process engineer for Marathon Ashland Petroleum, LLC, in Garyville, Louisiana.

Brad Michael Martin (B.S. 1993) has a new job as a refining engineer at Marathon Ashland Petroleum, LLC, in Garyville, Louisiana. He enjoys bowling, traveling, and LSU sporting events and has been married for two years.

Steve L. Mason (B.S. 1992) recently began working in the process control department of Lyondell-Citgo Refinery in Houston. He specializes in advanced process control and online optimization.

Pankaj Nigam (M.S. 1994) is based at the Procter & Gamble facility in Cincinnati, Ohio. He is working on product development in the research and development department. He said that some of his best memories are from his time at LSU.

Cory J. O'Quinn (B.S. 1996) works as a chemical engineer for PPG Industries in Lake Charles, Louisiana.

Brent Richard Ozenne (B.S. 1998) works as a production engineer for BP Amoco in the deepwater production business unit in Houston.

Gustavo E. Paredes (B.S. 1997) has worked for Honeywell as a major project pursuit coordinator since 1998. He lives in Caracas, Venezuela.

Melissa McCutcheon Picard (B.S. 1998) is attending the School of Medicine at the LSU Health Sciences Center in New Orleans.

Jacob T. Richardson (B.S. 1996) works as a process engineer for IMC Phosphates. He recently earned an M.B.A. degree from LSU.

Venugopal Santhanam (B.S. 1998) is pursuing his doctorate at Purdue University.

Bijan Seyfzadeh (Ph.D. 1999) is a research associate at the Center for Advanced Engineering Fibers and Films at Clemson University.

Mark S. Seymour (B.S. 1995) and **Shannon Berteau Seymour** (B.S. 1996) have twin sons, Andrew and Matthew, who were born March 20, 2000. Mark works as a run-plant engineer for Dow Chemical Company, and Shannon is a full-time mom. They live in Destrehan, Louisiana.

Rakshay R. Shah (B.S. 1997) works as a production engineer for the light hydrocarbon (ethylene) unit at Dow Chemical Company in Plaquemine, Louisiana.

Adrian B. Sherrill (B.S. 1996) is a graduate student at the University of Delaware.

Mark W. Whiteside (B.S. Exchange Student 1994-95) signed our guest book expressing "fond memories" of his time at LSU.

2000

Timothy Dawag (B.S. 2000) has a new job as a chemical engineer with Picatinny Arsenal in Dover, New Jersey. In his free time, he enjoys golfing and hiking.



In Memoriam

The Gordon A. and Mary Cain Department of Chemical Engineering at LSU extends its deepest sympathy to the friends and families of those alumni who passed away.

.....

T. Ben Arnold
(B.S. 1940, M.S. 1942)

Whitney P. Breaux
(B.S. 1956)

Roy Paul Daniels
(B.S. 1926, M.S. 1927)

Thomas Harper Goodgame
(B.S. 1947)

Sebert A. Haynes (B.S. 1960)

Harold L. Keaton (B.S. 1948)

Kerry R. Kelly (B.S. 1975)

Freddy Wallis Landaez (B.S. 1959)

Luis Alberto Wallis Landaez
(B.S. 1957)

Robert Emmett O'Connor
(B.S. 1943)

Paul Kenneth Raiford (B.S. 1950)

Otis B. Rowland (B.S. 1938)

Lost Alumni

WE NEED YOUR HELP:

We would like to thank the treasured alumni who forward up-to-date information and current addresses for both themselves and others. Although many of our past graduates can be located easily thanks to the Internet, a surprisingly large number of our alumni still have not been found.

Even though employment opportunities in the field of chemical engineering can sometimes require an extremely volatile lifestyle, many of our graduates keep in touch years after the excitement of the diploma ceremony has waned. If you happen to know any information regarding the following alumni, contact us at 225/578-3242 or at gradcoor@che.lsu.edu. We would like to send a newsletter to as many of our graduates as possible.

1935

Henry P. Broussard
Mary L. Digirolamo
Charles Edgar Gill
Richard A. Pratt
Clark W. Rider
Frank W. Valls
Guy G. Vanderpool

1936

James R. Britt
Lealand A. Enberg
Hamilton M. Johnson
Louise T. Kennedy
Francisco Pepito Pilapil
Alvin D. Rolufs

1937

John Lucious Burt
Delma McCabe Cointment
Richard L. Hodges
Edwin Liebert
Morris Leonard Perlman
William Everitt Rowbotham
Robert Boyd Stewart
M. R. Subra
William Owen Switzer

1938

James Camille Aucoin
William Yeoman Gissel
Walter Hudson Johnson
Gangadhar Dinker Kane
Herman Siegel

1939

Angel Alberto Colon
John H. Doherty

James Hardie McGee
Sidney Schulder
David Connell Walsh

1940

Henry Blanchet
James Wilson Bridges
Edward Stirling Johnson
Y. Ebra Jose
James V. Senese

1941

Harry Clair Cole
Charles Arthur Overstreet
Willis Wilcox Williams

1942

William Fowler Daniels
Varner E. Dudley
Gilbert Fletcher Moore
James Stanton Patterson

1943

John W. Mizenko
George Albert Speir

1944

Manuel Mestre
Jack William Racine

1945

Armando Alonso
Juan Castresana
Karl Albert Muller
Charles Bernard Richard

1947

George Charles Conrad

1948

William B. Chandler
Clarence E. McMillan
Edward O'Donnell
Charles Joseph Perilloux
Stephen A. Winborn

1949

Maurice Gordon Baxter
Richard Cameron Berry
Thomas Fulton Burke
Edmund Pettus Davis
Billy Joe Grady
Thomas Moody Logan
John Rurick Major
Edward M. Miscar
Pablo Navarrete Vaillant
Bruce Eugene White
Ben Allen Willard

1950

Harish Chandra Anand
Earl Paul Babin
Maurice G. Baxter
Richard C. Berry
Raul Victor Capote
Vincente Carreto de la Mora
Albert Lacy Fourmy
Gene Armond Freiss
Juan Ignacio Gabilondo
Prasanna C. Goswami
Boyce Nunnally
Clarence Earl Phillips
Robert Denton Platt
Wilson Clyde Pullig
Theodore Russell Ray

Oswaldo R. Rodriguez
Jose Sales
Claude Joe Stiles
Manuel Fausto Villapol

1951

Basil Wayne Andrews
Martinez Ricardo Felix
Albert L. Gagneux
Ruble Landis Huff
Lonnie Zach Mallory
Jimmy Edgar Middleton
Pramod Lal Sarma
Arthur Wellington Sellers
Elvin Andrew Stafford

1952

Omar Arape
Fernando Hoyos Bergonzoli
Raymond Raffray
Andre Edward Rouillant
John Dempsey Stokes

1953

Mansour Ghadar
Riyad Abdallah Khalaf

1954

Philip Earl Brubaker
Robert W. Duhl
John B. Fontenot
Kenneth Odell Halbrook
Gene Addison Johnson
Humberto Pinheiro Machado
Jose Antonio Moncada
Freeman Louis Morgan
Mario Posada
Roy T. St. Pierre
Kenneth L. White

1955

Zevada M. Avalos
 Wiley B. Fisackerly
 George Mathieu Guidroz
 Stanley Dison Hanesworth
 Raymond Calvin Hatfield
 Habib Labbauv
 Guy Clifton McCombs
 Wilhelmus Melis
 Patrick Gerald Simms
 James B. Starks
 Ezra Jasper Westbrook
 George W. Wright

1956

Thomas W. Howard
 Kenneth Hoy
 Robert Pole

1957

Austin C. Abshier
 Philip Dominic Accardo
 Yeganeh A. Amir
 Jose A. Chapman
 Rafael Jorge Garcia
 Frederick Eugene Marsh, Jr.
 John William Maurin
 Felix Fortune Planche
 Walter James Porter
 Silva Joaquin Sanchez
 Regulo Atilio Sardi
 Harold Alfred Simms
 Ignacio Warner

1958

Joseph M.P.H. Adam
 Augustine Joseph Corona
 Harry Alonzo Edwards
 Bernard J. Goussault
 Paul Joseph Gravel
 Franklin Murry Ingram
 Mohan Singh Kothari
 Ferdinand Louis Larue
 Euclide Howard Leleux
 Jean Pierre Mariani
 William Claborn Meek
 Bobby Morgan Miller
 Maurice Khalil Nasser

Joseph Marie Pierre
 Joseph T. Regard

1959

Charles Ellis Adams
 Richard I. Brown
 James Kernon Crochet
 Jai Narain Goel
 Willard Milton Hanks
 Paul Richard James
 Thomas Charles James
 Harold Douglas Jelks
 Robert Harley Jines
 Habib Labbauf
 John Morgan Webre

1960

Charles Edwin Beckler
 Ronald G. Corley
 Ronald Anthony DeJean
 George Paul Distefano
 Charles Emory Knight
 William Francis Lanigan
 Michael Joseph Maurin
 Jose L. Mendez-Fuertes
 Larry Joseph Remont
 Calvin Antoine Rousse
 Shwen Ih Wang
 John Wurster Wheeler
 Hugh Glenn Wilson
 Don Wesley Wolsefer

1961

Heraldo Antonio Sifontes
 Agreda
 Ronald L. Clark
 Hector Joaquin Corella
 Robert Allen Davis
 Ernest Woodard Harrison
 James Cleveland Holland
 Boyd Young LeBlanc
 Jose G. Lopez-Barreda
 Humberto E. Lopez-Sanchez
 Eugie A. Martin
 Jorge Andres Clemente Pino
 Fernando Xavier W. Pires
 Victor Plas
 Emilio Rebull Rivera
 Konchady Nagesh Shenoy

William Dave Taylor
 Vincent Stephen Verneuil
 Glenn Lamar Wise
 Gary H. Young

1962

Jeff W. Baird
 Fred Edward Causey
 Charles Reggie Guerin
 Jack Welbur Harris
 James M. Shipp, Jr.
 Henry M. Troth

1963

James Leston Case
 Robert Guerra
 Billy Wayne MaGee
 Frank Nemours Newchurch
 Jimmie Doyle Pottorff
 Ramachandra M.R. Rao
 Jose Francisco Agreda
 Rodriguez
 Maria Aguilar Rodriguez
 Francisco J. Rovira
 Leo Simon Sues

1964

Joseph F. Accardo
 David Gray Caddy
 Ivan E. Caro
 Danilo P. Castillo
 Omar J. Esmal
 James Thomas Kennison
 Herbert James Louque
 James M. McCormick
 Gary Martin Montgomery
 Motiram Kisan Patil
 Denarakonda Hanumantha
 Rao
 Juan Ramon Santa-Coloma
 Robert Glenn Tripp
 Jose Tito Villa

1965

Nolan Joseph Adams
 James Henry Brooks
 Madhigiri S. R. Ramesh
 Richard C. Robinson

Nora Antonia Sanchez
 Antonio Velidanes

1966

Richard Freeman Buckley
 Harold Louis Hebert
 James Edward Horn
 Ronald C. Keller
 David Wesley Miner
 Sims Louis Roy
 Richard Joseph St. Pierre

1967

Raul Cardenas
 James H. Doub
 Joseph Larry Edmonson
 Ronald E. Jones
 Mauricio A. Lopez
 Wilbert S.F. Mackay
 Hooshang S. Moghani

1968

Ricardo J. Gomez
 Guy Jean-Pierre Harel
 Randall John Indovina
 Kenneth J. Parent, Jr.

1969

Antonio De Aguirre-
 Aurrecoch
 Alvin A. Fairburn
 Louis A. Gonzalez
 David R. Hendricks
 Virgil D. Joffrion
 John Randolph Langley
 Yu-Chin Liu
 Carlos E. Moreno
 Ivan A. Navarro

1970

Alvaro Campuzano

1971

Sain D. Anand
 Michael John Atchetee
 Jose F. Azouth

Leroy Joseph Cavaliere
 Thomas F. Dominick
 Richard Edwin Dorris
 Carl David Engel
 Charles Goodson Guffey
 Ronald Dean Miles
 Glen Dale Savoy
 William Alden Settoon
 Vinodchandra R. Shah
 Stephen R. Williamson

1972

Juan F. Ardila
 Robert John Camacho
 Bernad C. Chan
 Frank R. Cusimano
 Jose Rafael Morao
 Marshall Budd Nelson
 Richard Wayne Nill
 Sanford James Stinnett
 Mark A. Williard

1973

Denzel Allen Brown
 Justin Dwight Edwards
 Olivier Damianus Habibe
 Hsiao-Nan Huang
 Mohammad Reza Karbassian
 Ronald Jules Manuel
 Richard Lee McGlamery
 Madhusudan Nathany
 Mehmet Ozbay Ozelsel
 Lokesh H. Parikh
 Anan Siripong
 Marlin Rufus Vernon
 Roger Earl Waguespack

1974

Jamal Al-Din Barzinji
 Mohamad B. Behbehani
 Frank Darral Durringer
 Hafez Hafezzadeh
 Mostafa Mina
 Najmeh Sadighi-Nouri
 Solaiman G. Sindy
 Suresh Mansukhlal Vora
 Wing Yan Woo

1975

Rabie Ahdoot
 John Allen Alexander
 Mohammad Ali Movahed
 Ahmad Sharonizade
 Paul Timothy Siegmund

1976

Stephen William Krajcick
 Frederick Henry Pitts

1979

Manuel A. Arguello
 Ender J. Ferrer
 Carolyn R. Koontz
 Jamaledin Madjdpour
 Carl E. Sladek
 Tuan A. Tang
 Beth Maria Troxler

1980

Mary E. Ahner
 Mahmoud Madhat
 Alhashimi
 Bob B. Carter
 Villa D. Holland
 Bradley K. Kruelski
 Edward A. Thistlethwaite
 Labrador Angela Vitelli
 Martin K. Wiewiorowski

1981

Linda Lovorn Bonin
 Patrick C. Lejeune
 Andrew C. Mok

1982

Jean E. Carvajal
 James Douglas Griffin
 Joseph Khalk Koro
 Jaime A. Pineda
 Thomas Anthony Stroud

1983

Lawrence T. Faucheux
 Lily Gunawan
 Kenneth M. Jones
 Gregory B. Pickren
 Sharron R. Woodall

1984

Edwin Chukwudi Akujobi
 George M. Charron
 William W. Conway
 Rudyard E. Davidson
 Bernie Lofaso, Jr.
 Neftaly E. Rodriguez-Corea
 Susan K. Snodgrass

1985

Karen Craft-Kofai
 Mohamad Kheir S. Habbal
 Karen E. Korn
 Robert D. Moore
 Susanne Warren Tully
 Kigham Seropp Yeretizian

1986

Mohammed Nouredine
 Amrouni
 Andreas Phoebus
 Constantinides
 Alvaro Jarquin
 Hung Duy Nguyen
 Rammohan Varadarajan

1987

Stephen R. Brodt
 Sheng-Yang Ju

1988

David E. Cockrill
 Ileana Perez

1989

Michael R. Achacoso
 Michael W. Landry

1990

Dhananjay B. Ghonasgi

1991

Sriram Gangadharan
 Subhash R. Ghorpade
 Wai Shen Lee
 Yu Wen Lo
 Yeung Ho Park
 Philip Roberts

1992

Pankaj Agarwal
 Michael P. Bilello
 Scott J. Daigle
 Roland J. Doucet
 Reginald Little
 Jorge Rolando Paiz
 Hongmei Ren

1993

Yumi Akiyama
 Lufti A. Bafahgih
 Allen W. Bihm
 Cheng-Ho Chen
 Marc J. Chitty
 Jennifer A. Cole
 Mandar Dikshit
 Rajiv Gehani
 Betty Yeefei Huang
 Toni Weavil Hunter
 Manjunath Mahishi
 Arpaden Silaban
 Sudhanshu Thakur
 Sachit Verma

1994

Teri M. Achacoso
 Trent Bolling
 Andrew Cain
 Ming Chia
 Joseph L. Hamlin
 Jianxin Hu
 Ramon R. Rionda
 Vivek Shende
 Subramanyam Vdaygiri

1995

Shellen G. Cair
 Aimee G. Deangelo
 Dorinda S. Doraja
 Rajesh Girdhar
 Chun Han
 Eric D. Hollis
 John F. Ledoux
 William E. Mixon
 Max P. Morvant
 Quang V. Nguyen
 Xuxian Niu
 Jeannette Santos-Cordero
 Flavio Tinoco
 Quy T. Ton
 Shin Won

1996

Chad J. Bourgeois
 Kevin D. Burkes
 Deependra Charan
 Tanya Fruge
 Kai Z. Jiang
 Shane M. Johnson
 Damon P. Lechtenberg
 Yew K. Loo
 Bianca C. McWilliams
 Thomas Menuet
 Jonathan Miller
 Brad Oubre
 Quoc P. Phan
 Trent J. Schexnauldre
 Amritpal S. Sidhu

Alma C. Thomas
 Yihua Xiong

1997

Moh Fahrurrozi
 Wendy Harris
 George Holder
 Peter Minsong Kim
 Antwane Shephard
 Stefan Vost
 Brian Watts
 Tiyan Xu

1998

Diane Worthy Braselman
 Xueyu Chen
 Venu Gedela
 Bronson Guilbeau
 Cheng Pan
 Amit Sharma

1999

Michael E. Dean
 Franciscus X. Prawiro
 Shin Wong
 Sook-Wai Yei

Alumni Questionnaire

WE WOULD LOVE TO HEAR FROM YOU!

Please complete and return the following information form to:
 Gordon A. & Mary Cain Department of Chemical Engineering / Louisiana State University / Baton Rouge, Louisiana 70803-7020
 Or you can submit the information electronically to gradcoor@che.lsu.edu or through our website, www.che.lsu.edu

FULL NAME		NAME WHILE AT LSU, IF DIFFERENT	
YEAR GRADUATED		LSU DEGREE(S)	
ADDRESS	CITY	STATE	ZIP
HOME TELEPHONE	WORK TELEPHONE	E-MAIL	
OCCUPATION		WORK ADDRESS	
CURRENT ACTIVITIES (NEW JOB, RETIREMENT, HOBBIES, RECENT EVENTS, ETC.):			

THANK YOU FOR YOUR TIME AND COOPERATION!



LOUISIANA STATE UNIVERSITY

*Gordon A. & Mary Cain Department of
Chemical Engineering*
Baton Rouge, LA 70803-7020

Non-Profit Org.
U.S. Postage
PAID
Permit No. 733
Baton Rouge, LA
