

SUCCESS WITH LOUISIANA ENERGY CODE

Recommended Practices for Optimized Energy Savings
for Builders/Trades & Code Officials



PLUMBING

PLUMBING INSTALLATION



PLUMBING

Installation

- **JC 1:** Cut all holes cleanly and no more than 1 inch larger than the penetrating object.
- **JC 2:** Air seal plumbing penetrations between conditioned and unconditioned space. Use fire-rated sealants where applicable.
- **JC 3:** For walls that will not have an interior finish and are separating conditioned and unconditioned spaces, insulate wall cavities and install an interior air barrier.
- **JC 4:** Hot water pipes must be insulated to R-2 when required.



PLUMBING

PLUMBING INSTALLATION

JC 1: Cut all holes cleanly and no more than 1 inch larger than the penetrating object.

- How
- Why
- What to avoid



How?

Cut holes to match piping



Why?





Does insulation seal holes?





How much material does it take to fix a big hole?



PLUMBING JC 1



Compared to how much it take to fix this?

PLUMBING

PLUMBING INSTALLATION

JC 2: Air seal all penetrations between conditioned and unconditioned space. Use fire-rated sealants where applicable.

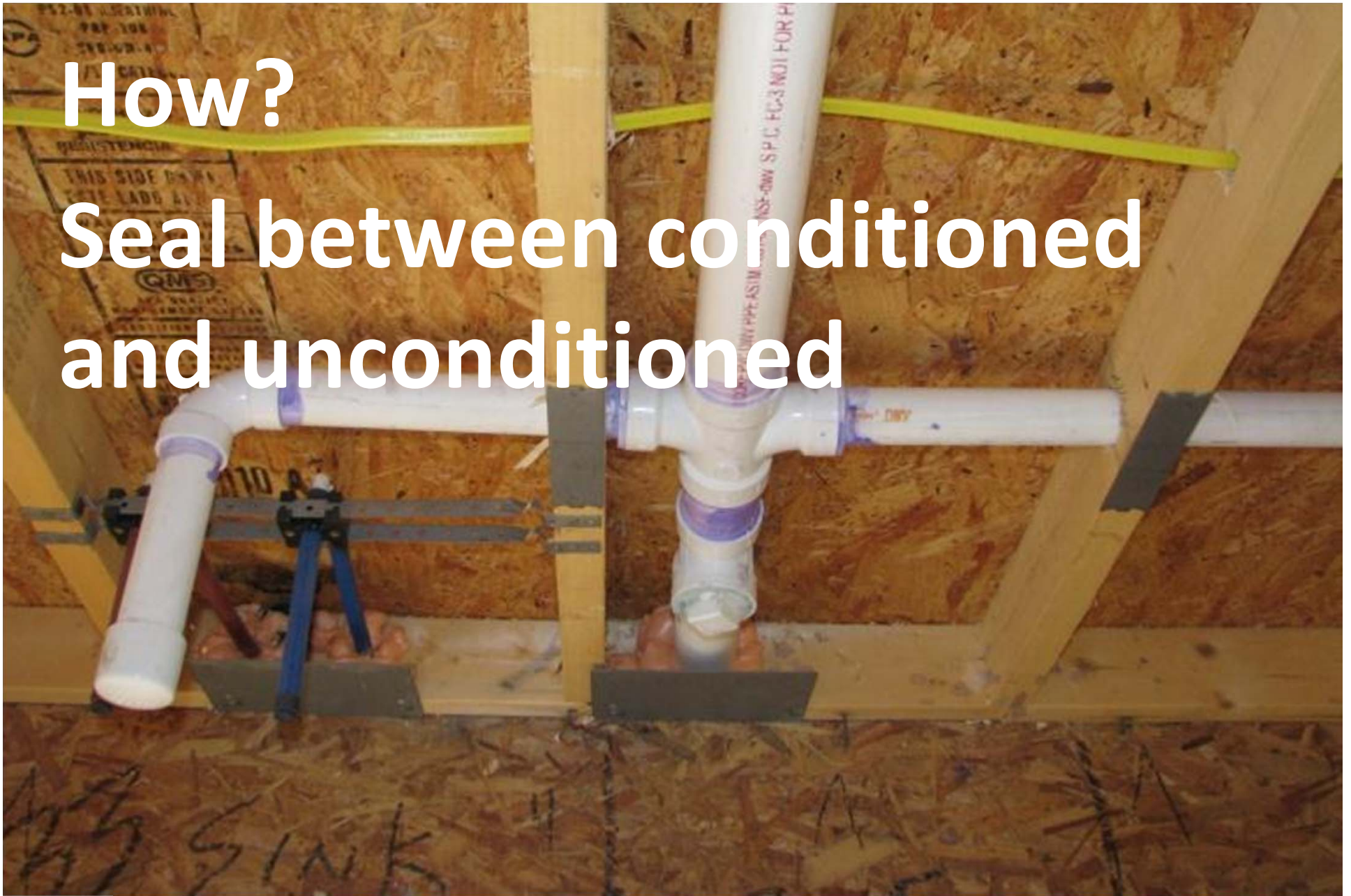
- How
- Why
- What to avoid



PROCESS

How?

Seal between conditioned and unconditioned



Why?







PLUMBING

PLUMBING INSTALLATION

JC 3: For walls that will not have an interior finish and are separating conditioned and unconditioned spaces, insulate wall cavities and install an interior air barrier.

RECOMMENDED: rigid air barrier.

- How
- Why
- What to avoid



PROCESS



How?
Install insulation
Install backing
Seal seams

	GROUP	SPACING
STANDARD	GREEN	16" OC
STRUCTURAL	RED	16" OC
STRUCTURAL PLUS	BLACK	16" OC
SUPER STRUCTURAL	BLUE	24" OC





Why?



PLUMBING JC 3



Is this sealed?



PLUMBING

ELECTRICAL INSTALLATION

JC 4: Hot water pipes must be insulated to R-2 when required.

- How
- Why
- What to avoid



PROCESS



PRODUCT